

WHAT IS NON-SMALL CELL LUNG CANCER (NSCLC)?



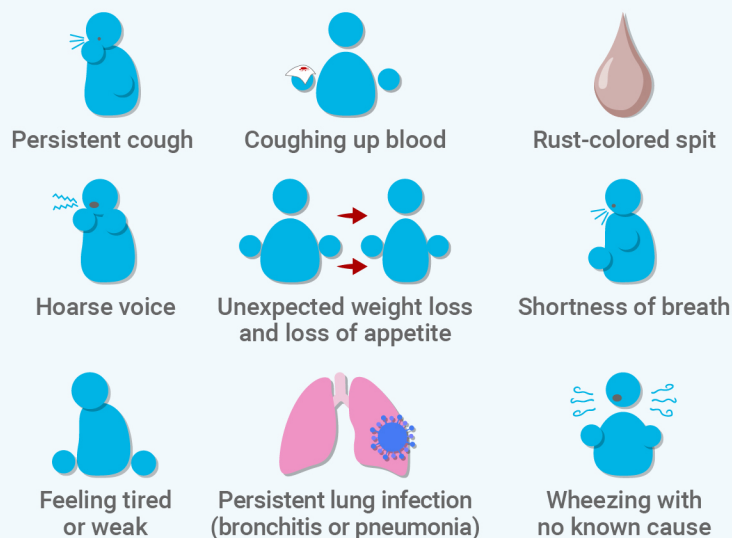
A Breath of Hope
LUNG FOUNDATION

YouAndLungCancer.com

NSCLC is the **MOST COMMON TYPE** of lung cancer.



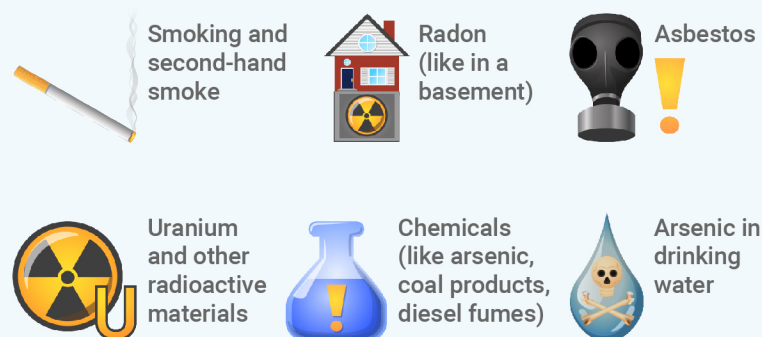
Symptoms of NSCLC are **NOT SPECIFIC**. Possible symptoms of NSCLC are:



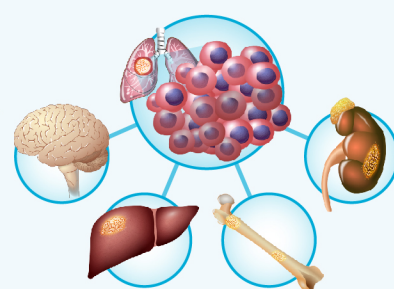
TREATMENT OPTIONS for NSCLC are:



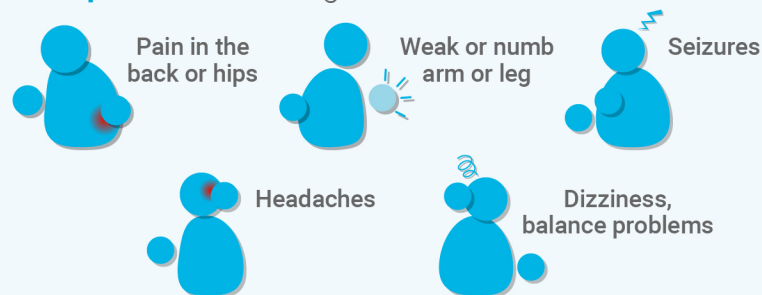
Limit your exposure to these **RISK FACTORS**:



A cancer that **SPREADS** to another site or organ is called a **METASTASIS**.



Symptoms that NSCLC has spread to other organs:



When you meet with your doctor, **be sure to ask lots of questions** and **make a treatment plan together**.



For more information visit:
YouAndLungCancer.com

Developed by A Breath of Hope Lung Foundation and Mechanisms in Medicine Inc.



A Breath of Hope
LUNG FOUNDATION

Mechanisms in
Medicine
Interactive Animated Medical Education